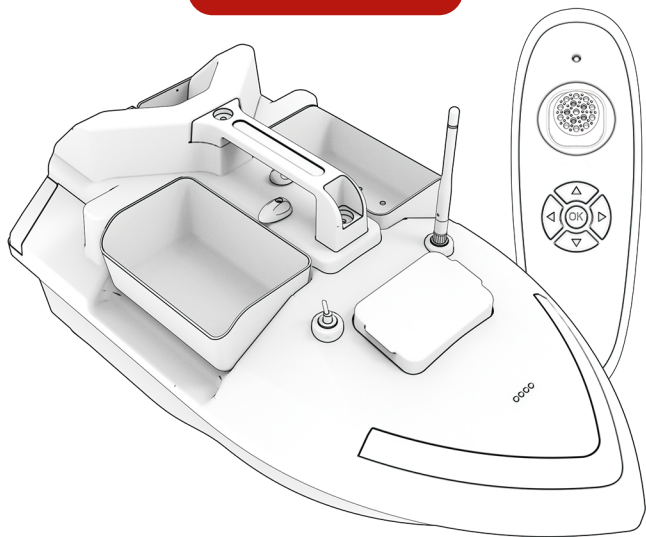


UB01 BAIT BOAT

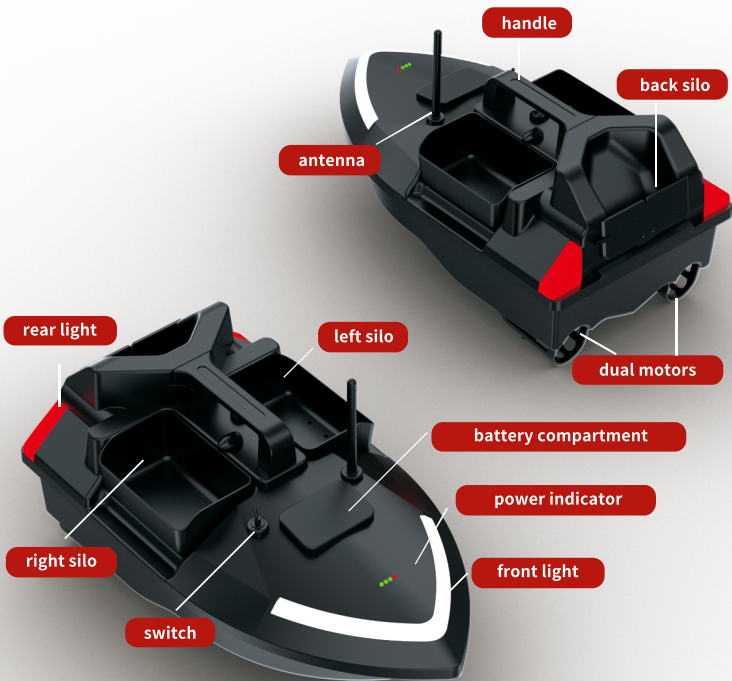
ORIGINAL VERSION



USER MANUAL

UB01 BAIT BOAT

Product Details



UBDI BAIT BOAT



Start up

1. Place the boat on a flat road and turn on the power of the boat
2. Push the switch of the remote control, the indicator light of the remote control is always on, the front light of the boat is not on

Note: Do not place the boat on a slope before it is paired. Operate the left and right motors to see if they work before putting in the water

Fixed-speed cruise

1. Push the joystick up
 2. Long press the fixed-speed cruise button to enter the fixed-speed cruise mode
 3. The remote control joystick can fine-tune the direction of the boat
- Remarks: After entering the fixed-speed cruise control mode, press the fixed-speed cruise button again to exit the cruise control

Lighting control

1. Press the lighting button on the remote control, the headlights of the boat will flash. Press again to keep the headlights on, and press again to turn off the lights
2. When the boat turns left, the left tail light is always on; when the boat turns right, the right tail light is always on

Low battery reminder

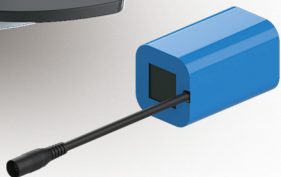
1. When the boat is in a low battery state, the remote controller will make a "beep" and "beep" prompt sound
2. When the remote control is in a low battery state, the indicator light of the remote control will flash

Frequency Matching

Press the OK button on the remote control and hold, then turn on the boat switch, finally turn on the remote control switch, and when you hear a "beep" sound, the frequency pairing is complete

(When the boat is not matching with the remote control, please try this method to repair it)

UB01 BAIT BOAT



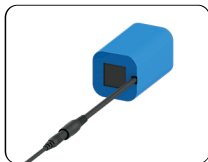
STREAMLINED HULL
2.4G REMOTE CONTROL
7.4V LARGE CAPACITY BATTERY

Battery usage and charging instructions:

- Boat battery (standard configuration)

- Connect to the power supply

This boat has a built-in battery, just connect the battery connector when using



Maintenance

- **remote control**

Please remove the battery when not in use for a long time.

- **motor**

Check the motor for debris after each use

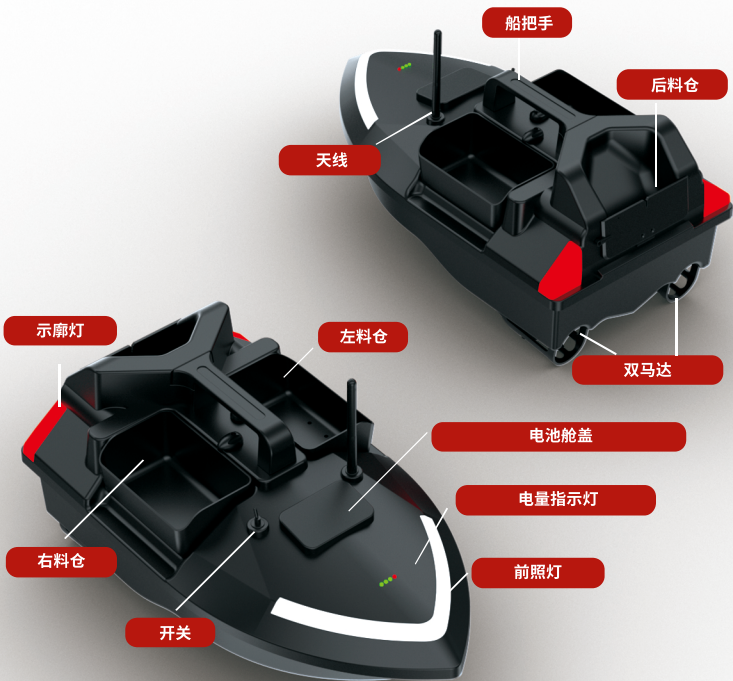
- **Boat Hull**

1. After use, please wipe off the water to keep the hull dry and clean.
2. When the battery is not in use for a long time, please take it out and charge it for storage.
3. Do not store the boat with corrosive liquids
4. Keep away from high temperature objects.
5. When not in use, please store the boat to prevent dust.



UB01 BAIT BOAT

产品细节



UBO1 BAIT BOAT



开机

- 1.船放置在平坦路面，打开船电源
 - 2.推动遥控器开关键，对频后遥控器指示灯常亮，船前灯不亮
- 注意：船对频前不要放在斜坡，在下水前操作一下左右马达看是否工作

定速巡航

- 1.遥控杆向上推动
 - 2.长按定速巡航键，进入巡航模式
 - 3.遥控杆可以微调船航行的方向
- 备注：进入定速巡航模式后，再按定速巡航键退出定速巡航

灯光控制

- 1.按下遥控器灯光键，船前灯闪烁。再按一下船前灯常亮，再按则关闭灯光
- 2.船在行驶过程中船向左转时，左尾灯常亮；船右转时，右尾灯常亮

低电提醒

- 1.船处于低电量状态时，遥控器发出“滴”“滴”的提示声
- 2.遥控器处于低电量状态时，遥控器指示灯闪烁

对频

按紧遥控器OK键，船通电后再打开遥控器开关键，听到“滴”声即对频完成

(当船和遥控器连接不上时，重新按此方式进行对频)

UB01 BAIT BOAT



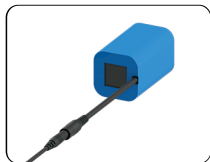
流线型船体
2.4G 遥控器
7.4V 大容量电池

电池使用与充电说明:

●主机电池 (标配)

本机内置一组电池, 使用时将电池接口对接即可

●连接电源



保养维护

● 遥控器

在长时间不使用时请取出电池。

● 马达

每次使用完后要检查马达是否有缠绕杂物

● 船体

- 1、使用完毕后请擦拭水分保持船体的干燥和清洁。
- 2、电池在长时间不使用时，请取出并充电存放。
- 3、不要把腐蚀性液体和物品一起存放
- 4、请勿靠近高温物体。
- 5、不使用时，请将打窝船存放起来，以防沾尘土。

